

Bell Heater Construction Workshop

With:

Alex Chernov, “Stovemaster”

September 24-26, 2010
Courtenay, Vancouver Island, BC, Canada

Bell Heater Workshop

Table of Content

Outline.....3
Workshop Logistics.....3
Goals.....3
Safety.....3
Heater Core.....4
Heater Facing.....4

Bell Heater Workshop

Outline

- Overview of the basic theory for bell heater design and construction.
- Retrofit construction of a smaller double-bell heater with black bake oven into a country home in the Courtenay area on the Vancouver Island, BC, Canada.

The heater will have a 24"x36" core and is planned to be finished during the workshop with clay pavers laid as shiners in thin set arriving to approximate finished dimensions of 30"x 42". It will be connected to the existing 6" diameter insulated stainless steel chimney.

Participants will be provided with a complete set of drawings for this double bell heater and upon completion of the workshop will be able to build this heater on their own.

Workshop Logistics

Workshop has been approved by the MHA Educational Committee. MHA Certified Heater Masons attending this workshop will receive 4 points towards their continued education goals.

Workshop is limited to a maximum of 12 participants.

Workshop fee of \$320 CDN including taxes includes lunches. Lodging is not provided and its cost is not included in the workshop fee. The hosts will be taking payments by Visa or Master Card over the phone. The full cost of the course is due up front to confirm a spot.

Interested people should reserve a spot by contacting Kim and Lorne Harder at a toll free number 1-888-288-2144 or by e-mail: lkharder@island.net .

Kim & Lorne Harder
Forbidden Plateau B&B
4343 Forbidden Plateau Rd.
Courtenay, B.C.
V9J 1R2
www.forbiddenplateau-bandb.com

Goals

Our goal is to build the complete heater in a hands-on workshop environment where everyone gets a chance to work on the heater. We plan on having a test fire at the end of the 3rd day.

Safety

All participants must bring their own safety equipment:

- Safety boots or closed toed shoes (no sandals)
- Eye protection;

Bell Heater Workshop

- Hearing protection;
- Dust mask;
- Gloves (rubber and construction).

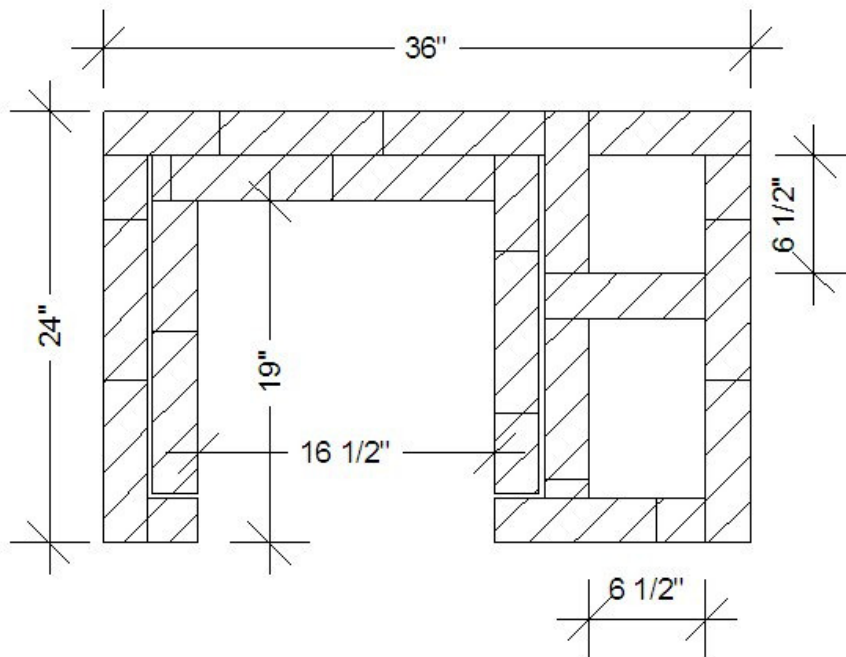
Participants should expect to be working with refractory and clay brick, refractory and thin set mortars, and ceramic wool. Participants should bring their own basic hand tools (trowels etc.) and should expect to be working with the following power tools:

- Wet saw
- Small angle grinder.

Heater Core

Test heater core will be built using standard 2 ½" firebricks and large refractory tiles 12"x24"x2 ½" with 2 ½" inner firebox liner. The heater is designed for 35-40lbs load of hardwood. Nominal heat output under two 38lbs loads a day is 16000 Btu hr.

Heater core plan:



Heater Facing

The test heater will be faced using clay pavers on shiners laid in thin set mortar.